

curved lid

# Tool Chest

## Materials & Hardware

### CASE

A	Lower Sides (2)	280 x 213 x 12
B	Front (1)	500 x 102 x 12
C	Upper Sides (2)	150 x 137 x 12
D	Back (1)	500 x 350 x 12
E	Case Dividers (2)	486 x 254 x 12 Ply.
F	Drawer Guides (2)	254 x 20 x 12
G	Top (1)	510 x 162 x 19
H	Cleat (1)	474 x 19 x 19
I	Base Front/Back (2)	510 x 38 x 19
J	Base Sides (2)	290 x 38 x 19
K	Upper Bay Top (1)	486 x 115 x 12
L	Upper Bay Bottom (1)	474 x 115 x 12
M	Drawer Dividers (4)	32 x 15 x 12
N	Drawer Stop (1)	474 x 25 x 6
O	Lower Bay Bottom (1)	474 x 142 x 12
P	Lower Bay Ends (2)	58 x 136 x 12

### DRAWERS

Q	Small Drawer Front/Back (4)	122 x 32 x 6
R	Small Drawer Sides (4)	115 x 32 x 6
S	Small Drawer Bottoms (2)	116 x 109 x 6 Ply.
T	Ctr. Drawer Front/Back (2)	182 x 32 x 6
U	Centre Drawer Sides (2)	115 x 32 x 6
V	Centre Drawer Btm. (1)	176 x 109 x 6 Ply.
W	Lg. Drawer Front/Back (2)	450 x 58 x 6
X	Large Drawer Sides (2)	136 x 58 x 6

Y	Large Drawer Bottom (1)	444 x 130 x 6 Ply.
Z	Lwr. Drawer Front/Back (2)	434 x 70 x 12
AA	Lower Drawer Sides (2)	266 x 70 x 12
BB	Lower Drawer Bottom (1)	422 x 254 x 6 Ply.

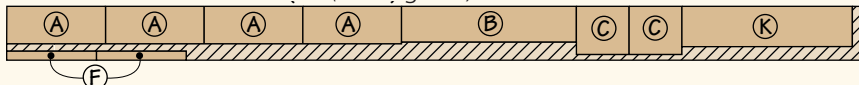
### LID

CC	Lid Front (1)	500 x 112 x 12
DD	Lid Sides (2)	130 x 112 x 12
EE	Lid Wedges (8)	130 x 58 x 12
FF	Lid Staves (4)	500 x 58 x 12

- (4) 6g x 19mm c/s Woodscrews
- (19) 6g x 25mm c/s Woodscrews
- (4) 6g x 38mm c/s Woodscrews
- (10) 8g x 25mm c/s Woodscrews
- (3) 8g x 32mm c/s Woodscrews
- (1) 900mm Continuous Hinge
- (3) 12mm-dia. Knobs
- (3) 16mm-dia. Knobs
- (2) 22mm-dia. Knobs
- (2) Chest Lifts w/Screws

## Cutting Diagram

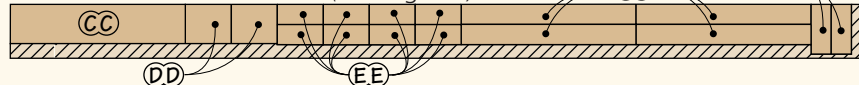
2400 x 140 x 12 Radiata Pine (select grade)



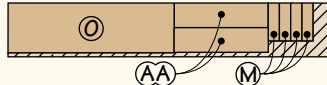
2400 x 140 x 12 Radiata Pine (select grade)



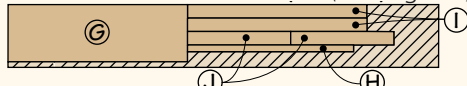
2400 x 140 x 12 Radiata Pine (select grade)



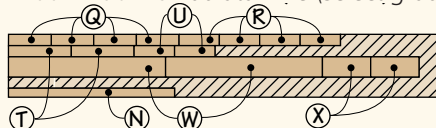
2400 x 140 x 12 Radiata Pine (select grade)



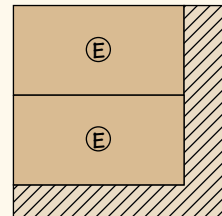
2400 x 190 x 19 Radiata Pine (select grade)



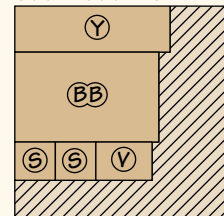
2400 x 190 x 6 Radiata Pine (select grade)



600 x 600 x 12mm Ply



600 x 600 x 6mm Ply



G Top (1) 510 x 162 x 19 and  
O Lower Bay 474 x 142 x 12 and  
Z Lwr. Dr (2) 434 x 70 x 12  
do not fit onto a standard 140mm  
board. You might like to glue sections  
up from off-cuts to add extra width to  
the 140mm stock to make these  
components.